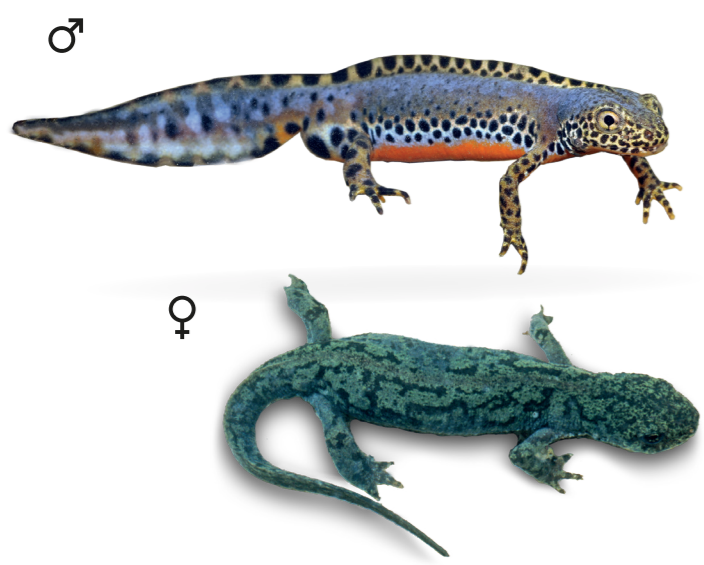
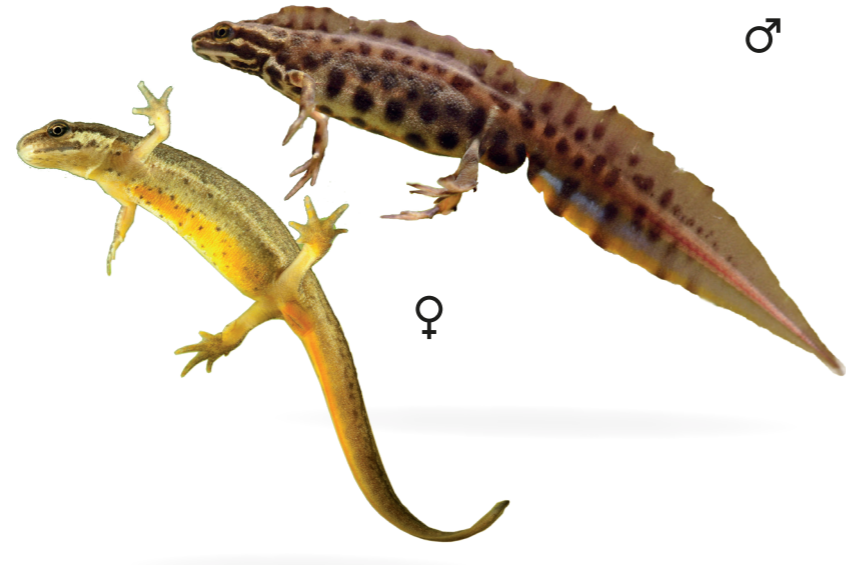


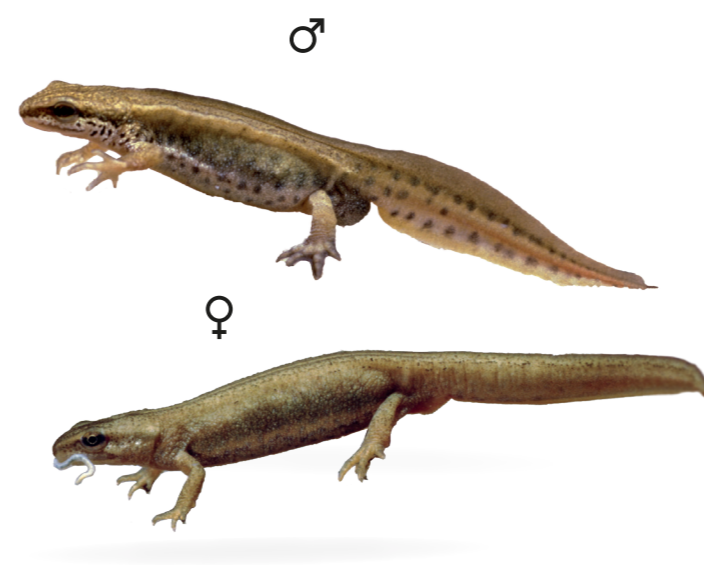
# Die Amphibien und Reptilien des Landkreises Miltenberg



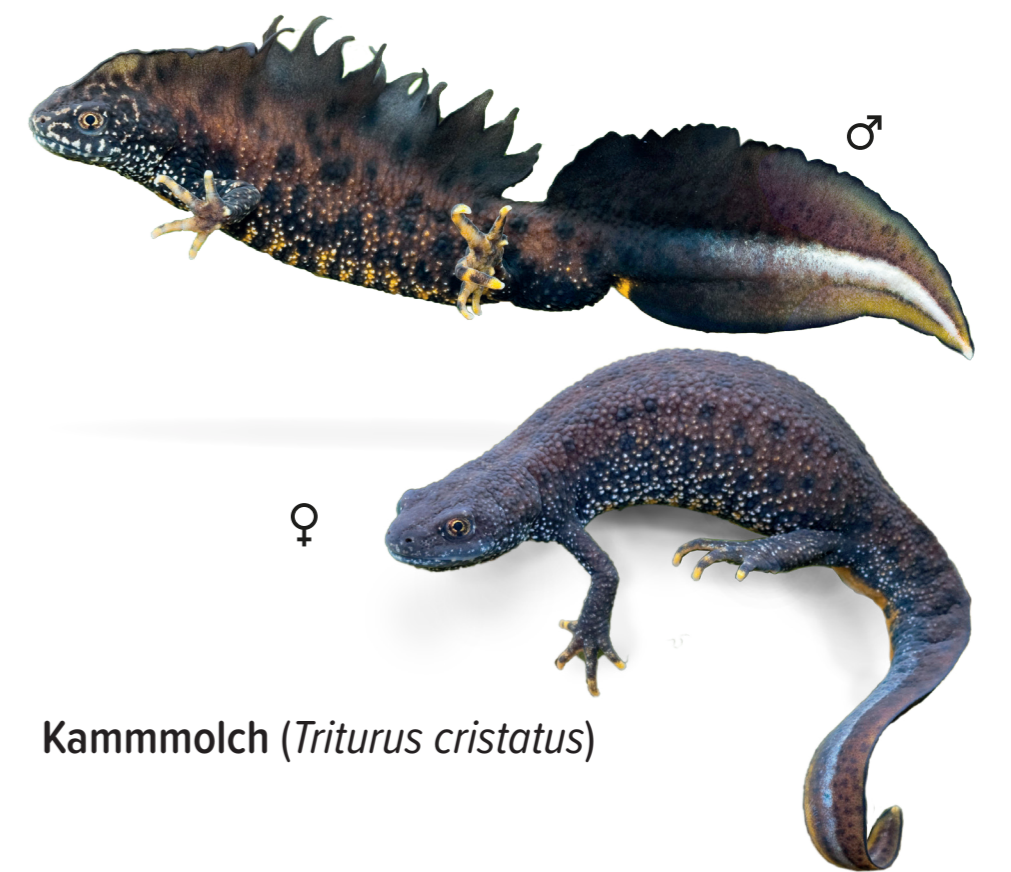
Bergmolch (*Ichtyosaura alpestris*)



Teichmolch (*Lissotriton vulgaris*)



Fadenmolch (*Lissotriton helveticus*)



Kammmolch (*Triturus cristatus*)



Feuersalamander (*Salamandra salamandra*)



Erdkröte (*Bufo bufo*)



Kreuzkröte (*Bufo calamita*)



Gelbbauchunke (*Bombina variegata*)



Laubfrosch (*Hyla arborea*)



Kleiner Wasserfrosch (*Pelophylax lessonae*)



Teichfrosch (*Pelophylax esculentus*)



Seefrosch (*Pelophylax ridibundus*)



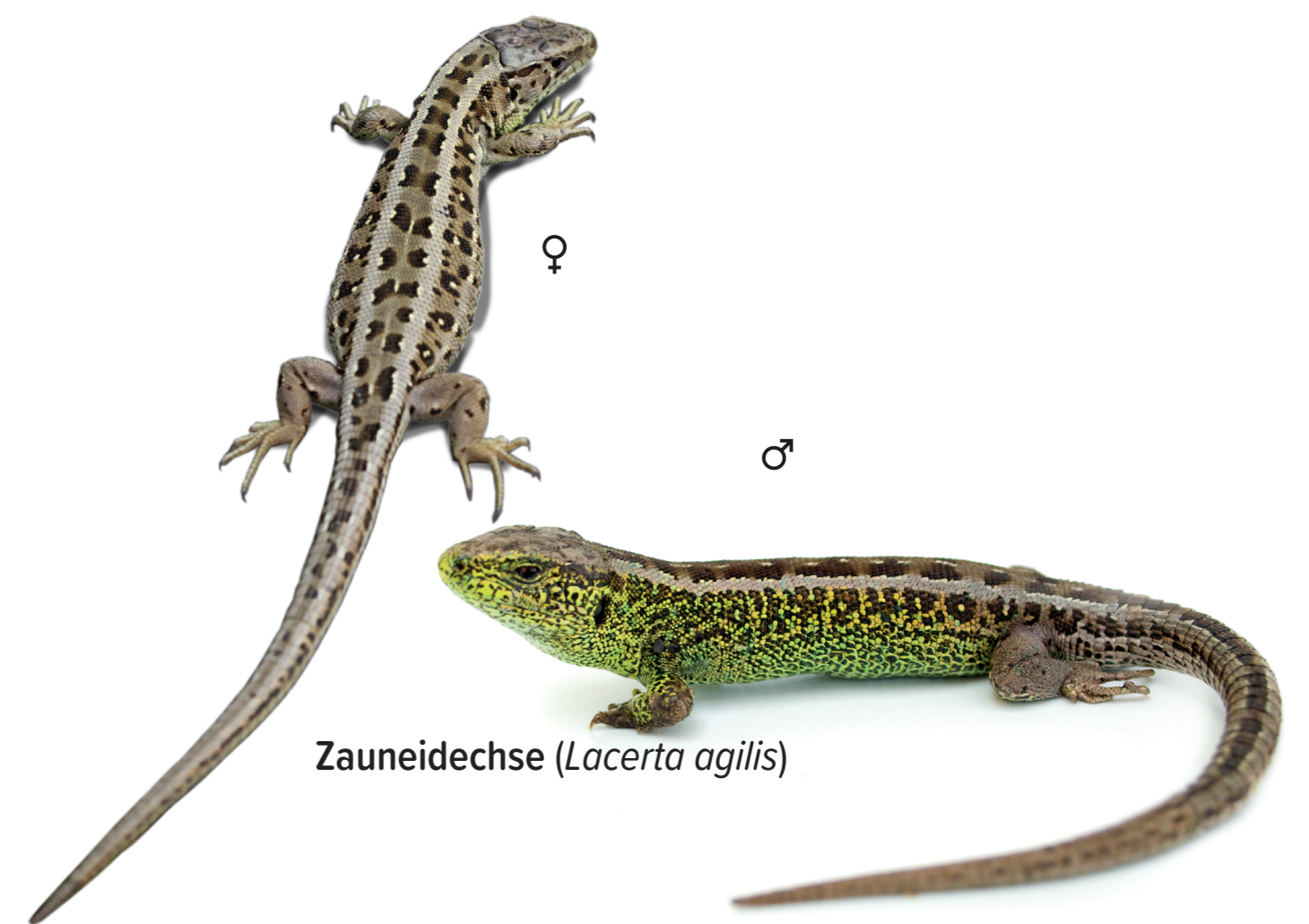
Grasfrosch (*Rana temporaria*)



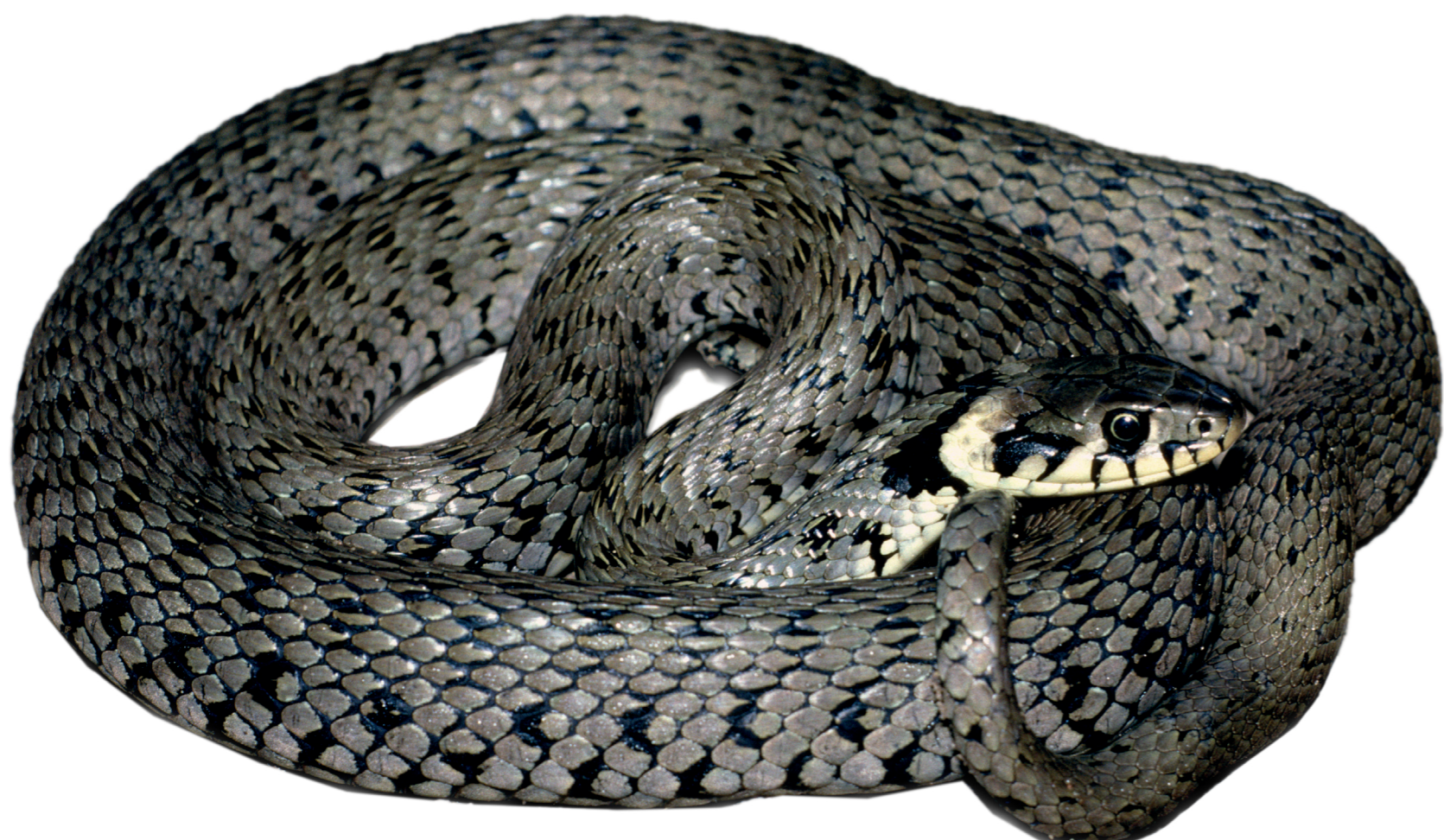
Blindschleiche (*Anguis fragilis*)



Waldeidechse (*Zootoca vivipara*)



Zauneidechse (*Lacerta agilis*)



Ringelnatter (*Natrix natrix*)



Schlingnatter (*Coronella austriaca*)

